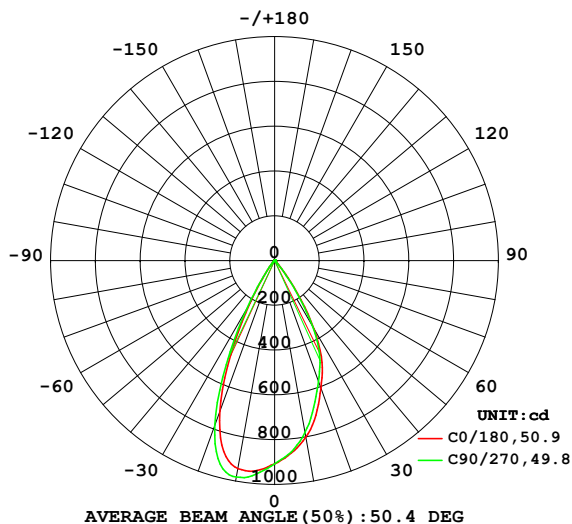


LUMINAIRE PHOTOMETRIC TEST REPORT

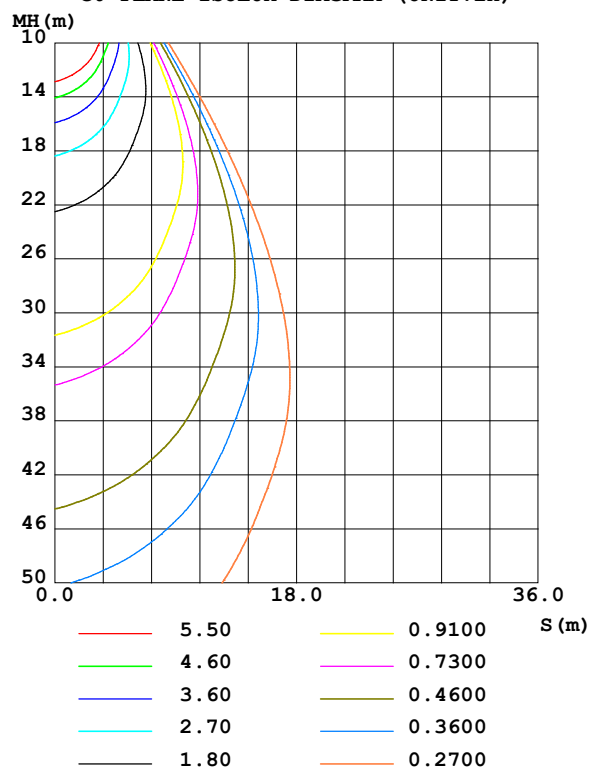
Test:U:220.68V I:0.0664A P:7.2634W PF:0.4955 Freq:49.99Hz UTHDi:0.00% ITHDi:0.00% KDisp:0 Lamp Flux:642.36x1 lm		
NAME: DL3593 3000K 50D	TYPE:	WEIGHT:
SPEC.:	DIM.:	SERIAL No.:
MFR.: VJC Lighting	SUR.: 40	Shielding Angle:

DATA OF LAMP		PHOTOMETRIC DATA Eff: 88.44 lm/W			
MODEL	DL3593 3000K 50D	I _{max} (cd)	992.8	S/MH(C0/180)	0.74
NOMINAL POWER(W)	8	LOR(%)	100.0	S/MH(C90/270)	0.76
RATED VOLTAGE(V)	220	TOTAL FLUX(lm)	642.36	η UP,DN(C0-180)	0.3,48.6
NOMINAL FLUX(lm)	642.36	CIE CLASS	DIRECT	η UP,DN(C180-360)	0.4,50.6
LAMPS INSIDE	1	η up (%)	0.7	CIBSE SHR NOM	0.75
TEST VOLTAGE(V)	220	η down (%)	99.3	CIBSE SHR MAX	0.75

LUMINOUS INTENSITY DISTRIBUTION DIAGRAM



C0 PLANE ISOLUX DIAGRAM (UNIT:lx)



C Range: 0 - 360DEG
C Interval: 22.5DEG
Test Speed: HIGH
Temperature: 25.3 °C
Operators: 001
Test Date: 2023-10-10

γ Range: 0 - 180DEG
γ Interval: 1.0DEG
Test System: EVERFINE GO-2000B_V1 SYSTEM V2.00.456
Humidity: 65.0%
Test Distance: 7.580m [K=1.0000]
Remarks:

ZONAL FLUX DIAGRAM

ZONAL FLUX DIAGRAM:

γ	C0	C45	C90	C135	C180	C225	C270	C315	γ	Φ zone	Φ total	%lum, lamp
10	801.4	751.8	780.5	880.3	943.3	987.8	981.9	924.1	0- 10	85.68	85.68	13.3,13.3
20	606.2	550.6	574.1	649.4	714.6	779.4	782.2	744.3	10- 20	223.8	309.5	48.2,48.2
30	354.0	377.3	341.3	280.9	226.8	224.8	250.3	316.1	20- 30	221.8	531.3	82.7,82.7
40	63.99	70.48	52.07	33.43	27.47	26.85	30.77	40.27	30- 40	87.04	618.3	96.3,96.3
50	9.715	8.729	8.028	7.033	6.915	6.975	7.613	8.484	40- 50	14.28	632.6	98.5,98.5
60	2.655	2.655	2.398	1.925	1.692	1.623	1.768	2.151	50- 60	3.966	636.5	99.1,99.1
70	0.5226	0.5299	0.4985	0.0997	0	0	0.0203	0.2687	60- 70	1.058	637.6	99.3,99.3
80	0	0	0	0	0	0	0	0	70- 80	0.0318	637.6	99.3,99.3
90	0	0	0	0	0	0	0	0	80- 90	0	637.6	99.3,99.3
100	0	0	0	0	0.0000	0	0	0	90-100	0.0008	637.6	99.3,99.3
110	0.0136	0.0159	0.0182	0.0159	0.0681	0.0685	0.0548	0.0388	100-110	0.0137	637.7	99.3,99.3
120	0.0701	0.0704	0.0819	0.1091	0.3448	0.3556	0.3239	0.2690	110-120	0.1005	637.8	99.3,99.3
130	0.3777	0.3705	0.4094	0.4774	0.9025	0.8774	0.8438	0.8044	120-130	0.3478	638.1	99.3,99.3
140	1.061	1.083	1.125	1.153	1.721	1.650	1.616	1.604	130-140	0.7530	638.9	99.5,99.5
150	1.913	1.964	1.990	1.943	2.606	2.533	2.473	2.455	140-150	1.124	640.0	99.6,99.6
160	2.532	2.552	2.574	2.522	3.278	3.245	3.179	3.071	150-160	1.183	641.2	99.8,99.8
170	2.965	2.948	2.993	3.102	3.661	3.721	3.655	3.488	160-170	0.8693	642.0	99.9,99.9
180	3.577	3.622	3.611	3.670	3.606	3.632	3.620	3.676	170-180	0.3290	642.4	100,100
DEG	LUMINOUS INTENSITY:cd									UNIT:lm		

Conical surface Flux(90deg): 628.04 lm

%lum = 97.8%

%lamp = 97.8%

Conical surface Flux(130deg): 637.29 lm

%lum = 99.2%

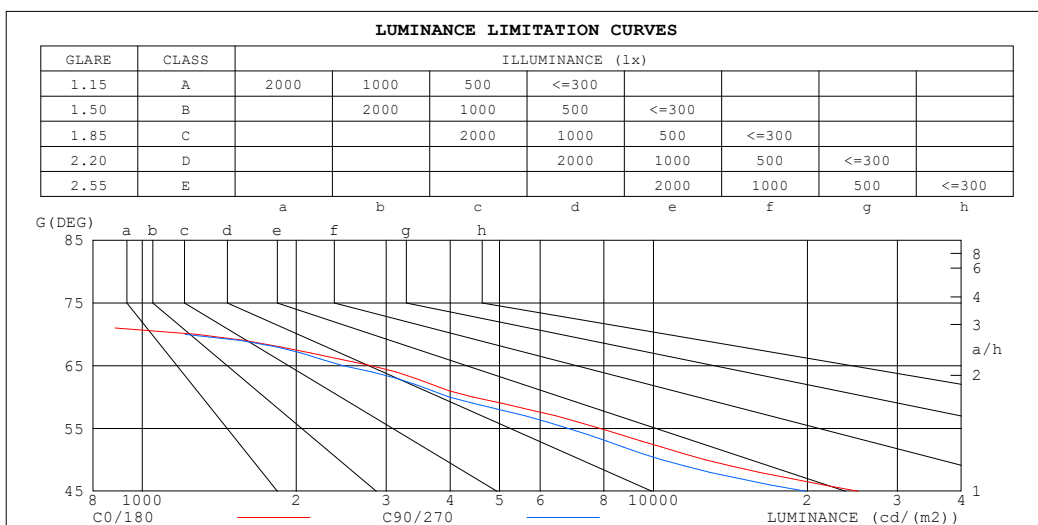
%lamp = 99.2%

C Range: 0 - 360DEG
 C Interval: 22.5DEG
 Test Speed: HIGH
 Temperature:25.3℃
 Operators:001
 Test Date:2023-10-10

γ Range: 0 - 180DEG
 γ Interval: 1.0DEG
 Test System:EVERFINE GO-2000B_V1 SYSTEM V2.00.456
 Humidity:65.0%
 Test Distance:7.580m [K=1.0000]
 Remarks:

LUMINANCE LIMITATION CURVES

Test:U:220.68V I:0.0664A P:7.2634W PF:0.4955 Freq:49.99Hz UTHDi:0.00% ITHDi:0.00% KDisp:0 Lamp Flux:642.36x1 lm		
NAME: DL3593 3000K 50D	TYPE:	WEIGHT:
SPEC.:	DIM.:	SERIAL No.:
MFR.: VJC Lighting	SUR.: 40	Shielding Angle:



LUMINANCE cd/(m2)		
G (DEG)	C0/180	C90/270
85	0	0
80	0	0
75	0	0
70	1278	1212
65	2808	2472
60	4443	3990
55	7875	6816
50	12645	10390
45	25115	19874

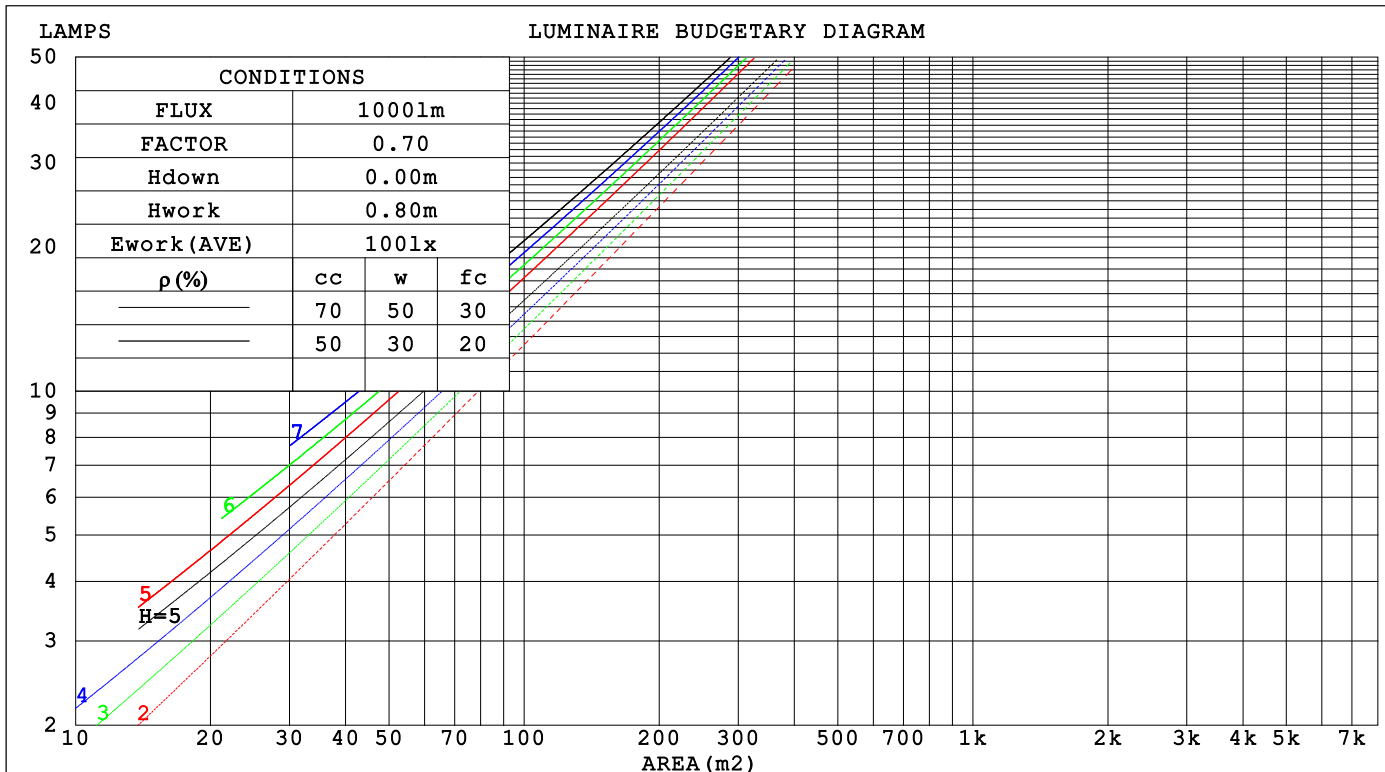
C Range: 0 - 360DEG
C Interval: 22.5DEG
Test Speed: HIGH
Temperature:25.3℃
Operators:001
Test Date:2023-10-10

γ Range: 0 - 180DEG
γ Interval: 1.0DEG
Test System:EVERFINE GO-2000B_V1 SYSTEM V2.00.456
Humidity:65.0%
Test Distance:7.580m [K=1.0000]
Remarks:

CU AND LUMINAIRE BUDGETARY ESTIMATE DIAGRAM

Test:U:220.68V I:0.0664A P:7.2634W PF:0.4955 Freq:49.99Hz		
UTHDi:0.00% ITHDi:0.00% KDisp:0 Lamp Flux:642.36x1 lm		
NAME: DL3593 3000K 50D	TYPE:	WEIGHT:
SPEC.:	DIM.:	SERIAL No.:
MFR.: VJC Lighting	SUR.: 40	Shielding Angle:

pcc	80%			70%			50%			30%			10%			0
pw	50%	30%	10%	50%	30%	10%	50%	30%	10%	50%	30%	10%	50%	30%	10%	0
pfc	20%			20%			20%			20%			20%			0
RCR	RCR:Room Cavity Ratio															



C Range: 0 - 360DEG
C Interval: 22.5DEG
Test Speed: HIGH
Temperature:25.3℃
Operators:001
Test Date:2023-10-10

γ Range: 0 - 180DEG
γ Interval: 1.0DEG
Test System:EVERFINE GO-2000B_V1 SYSTEM V2.00.456
Humidity:65.0%
Test Distance:7.580m [K=1.0000]
Remarks:

WEC AND CCEC

Test:U:220.68V I:0.0664A P:7.2634W PF:0.4955 Freq:49.99Hz			UTHDi:0.00% ITHDi:0.00% KDisp:0			Lamp Flux:642.36x1 lm		
NAME: DL3593 3000K 50D			TYPE:			WEIGHT:		
SPEC.:			DIM.:			SERIAL No.:		
MFR.: VJC Lighting			SUR.: 40			Shielding Angle:		

pcc	80%			70%			50%			30%			10%			0	
pw	50%	30%	10%	50%	30%	10%	50%	30%	10%	50%	30%	10%	50%	30%	10%	0	
pfc	20%			20%			20%			20%			20%			0	
RCR	RCR:Room Cavity Ratio						Wall Exitance Coefficients(WEC)										
0.0																	
1.0	.166	.094	.030	.159	.090	.029	.146	.084	.027	.134	.077	.025	.123	.071	.023		
2.0	.157	.086	.026	.152	.083	.026	.141	.078	.024	.131	.073	.023	.121	.069	.022		
3.0	.149	.079	.024	.144	.077	.023	.135	.073	.022	.127	.069	.021	.119	.066	.020		
4.0	.142	.074	.022	.138	.072	.021	.130	.069	.021	.122	.066	.020	.116	.063	.019		
5.0	.135	.069	.020	.132	.068	.020	.125	.065	.019	.118	.062	.019	.112	.060	.018		
6.0	.129	.065	.019	.126	.064	.018	.120	.061	.018	.114	.059	.017	.109	.057	.017		
7.0	.124	.061	.017	.121	.060	.017	.115	.058	.017	.110	.057	.016	.106	.055	.016		
8.0	.118	.058	.016	.116	.057	.016	.111	.056	.016	.107	.054	.016	.102	.053	.015		
9.0	.114	.055	.015	.111	.054	.015	.107	.053	.015	.103	.052	.015	.099	.050	.015		
10.0	.109	.052	.015	.107	.052	.014	.103	.051	.014	.100	.050	.014	.096	.048	.014		

pcc	80%			70%			50%			30%			10%			0	
pw	50%	30%	10%	50%	30%	10%	50%	30%	10%	50%	30%	10%	50%	30%	10%	0	
pfc	20%			20%			20%			20%			20%			0	
RCR	RCR:Room Cavity Ratio						Ceiling Cavity Exitance Coefficients (CCEC)										
0.0	.196	.196	.196	.168	.168	.168	.114	.114	.114	.066	.066	.066	.021	.021	.021		
1.0	.176	.163	.151	.151	.140	.130	.103	.096	.090	.059	.056	.052	.019	.018	.017		
2.0	.160	.138	.120	.137	.119	.104	.094	.082	.072	.054	.048	.042	.017	.015	.014		
3.0	.147	.119	.097	.126	.103	.084	.086	.071	.059	.050	.042	.035	.016	.014	.011		
4.0	.136	.104	.080	.117	.090	.070	.080	.063	.049	.046	.037	.029	.015	.012	.010		
5.0	.127	.093	.067	.109	.080	.058	.075	.056	.041	.044	.033	.024	.014	.011	.008		
6.0	.119	.083	.057	.103	.072	.050	.071	.050	.035	.041	.030	.021	.013	.010	.007		
7.0	.113	.075	.049	.097	.065	.043	.067	.046	.030	.039	.027	.018	.013	.009	.006		
8.0	.107	.069	.043	.092	.060	.038	.064	.042	.027	.037	.025	.016	.012	.008	.005		
9.0	.102	.064	.038	.088	.055	.033	.061	.039	.024	.035	.023	.014	.011	.008	.005		
10.0	.097	.059	.034	.084	.052	.030	.058	.036	.021	.034	.021	.013	.011	.007	.004		

C Range: 0 - 360DEG
C Interval: 22.5DEG
Test Speed: HIGH
Temperature:25.3℃
Operators:001
Test Date:2023-10-10

γ Range: 0 - 180DEG
γ Interval: 1.0DEG
Test System:EVERFINE GO-2000B_V1 SYSTEM V2.00.456
Humidity:65.0%
Test Distance:7.580m [K=1.0000]
Remarks:

UGR(Unified Glare Rating) Table

Test:U:220.68V I:0.0664A P:7.2634W PF:0.4955 Freq:49.99Hz UTHDi:0.00% ITHDi:0.00% KDisp:0 Lamp Flux:642.36x1 lm											
NAME: DL3593 3000K 50D						TYPE:			WEIGHT:		
SPEC.:						DIM.:			SERIAL No.:		
MFR.: VJC Lighting						SUR.: 40			Shielding Angle:		
ceiling/cavity	0.7	0.7	0.5	0.5	0.3	0.7	0.7	0.5	0.5	0.3	
walls	0.5	0.3	0.5	0.3	0.3	0.5	0.3	0.5	0.3	0.3	
working plane	0.2	0.2	0.2	0.2	0.2	0.2	0.2	0.2	0.2	0.2	
Room dimensions		Viewed crosswise					Viewed endwise				
x = 2H y = 2H	2H	23.0	23.9	23.3	24.1	24.3	22.5	23.3	22.7	23.5	23.7
	3H	22.9	23.7	23.1	23.9	24.1	22.3	23.1	22.6	23.3	23.5
	4H	22.8	23.5	23.1	23.8	24.0	22.2	23.0	22.5	23.2	23.4
	6H	22.7	23.4	23.0	23.7	23.9	22.1	22.8	22.4	23.1	23.3
	8H	22.7	23.3	23.0	23.6	23.9	22.1	22.7	22.4	23.0	23.3
	12H	22.6	23.3	22.9	23.5	23.8	22.0	22.7	22.4	23.0	23.2
4H	2H	22.8	23.5	23.1	23.8	24.0	22.2	23.0	22.5	23.2	23.4
	3H	22.6	23.3	22.9	23.5	23.8	22.0	22.7	22.4	23.0	23.2
	4H	22.5	23.1	22.9	23.4	23.7	21.9	22.5	22.3	22.8	23.2
	6H	22.4	22.9	22.8	23.3	23.6	21.8	22.4	22.2	22.7	23.1
	8H	22.4	22.8	22.8	23.2	23.6	21.8	22.3	22.2	22.6	23.0
	12H	22.3	22.8	22.7	23.1	23.5	21.7	22.2	22.2	22.6	23.0
8H	4H	22.4	22.8	22.8	23.2	23.6	21.8	22.3	22.2	22.6	23.0
	6H	22.3	22.7	22.7	23.1	23.5	21.7	22.1	22.1	22.5	22.9
	8H	22.2	22.6	22.7	23.0	23.4	21.6	22.0	22.1	22.4	22.9
	12H	22.1	22.4	22.6	22.9	23.4	21.6	21.9	22.0	22.3	22.8
12H	4H	22.3	22.8	22.7	23.1	23.5	21.7	22.2	22.2	22.6	23.0
	6H	22.2	22.6	22.7	23.0	23.4	21.6	22.0	22.1	22.4	22.9
	8H	22.1	22.4	22.6	22.9	23.4	21.6	21.9	22.0	22.3	22.8
Variations with the observer position at spacings(CIE Pub.117):											
S = 1.0H		+ 3.6 / -12.1					+ 3.9 / -11.7				
1.5H		+ 6.1 / - 9.4					+ 6.3 / - 8.7				
2.0H		+ 5.6 / - 5.9					+ 5.0 / - 5.1				

CIE Pub.117, 642.4 lm Total Lamp Luminous Flux Correct (8log(F/F0) = -1.5)
Area: 0.0012 m2

C Range: 0 - 360DEG
C Interval: 22.5DEG
Test Speed: HIGH
Temperature:25.3℃
Operators:001
Test Date:2023-10-10

γ Range: 0 - 180DEG
γ Interval: 1.0DEG
Test System:EVERFINE GO-2000B_V1 SYSTEM V2.00.456
Humidity:65.0%
Test Distance:7.580m [K=1.0000]
Remarks:

UTILIZATION FACTORS TABLE

Test:U:220.68V I:0.0664A P:7.2634W PF:0.4955 Freq:49.99Hz		
UTHDi:0.00% ITHDi:0.00% KDisp:0 Lamp Flux:642.36x1 lm		
NAME: DL3593 3000K 50D	TYPE:	WEIGHT:
SPEC.:	DIM.:	SERIAL No.:
MFR.: VJC Lighting	SUR.: 40	Shielding Angle:

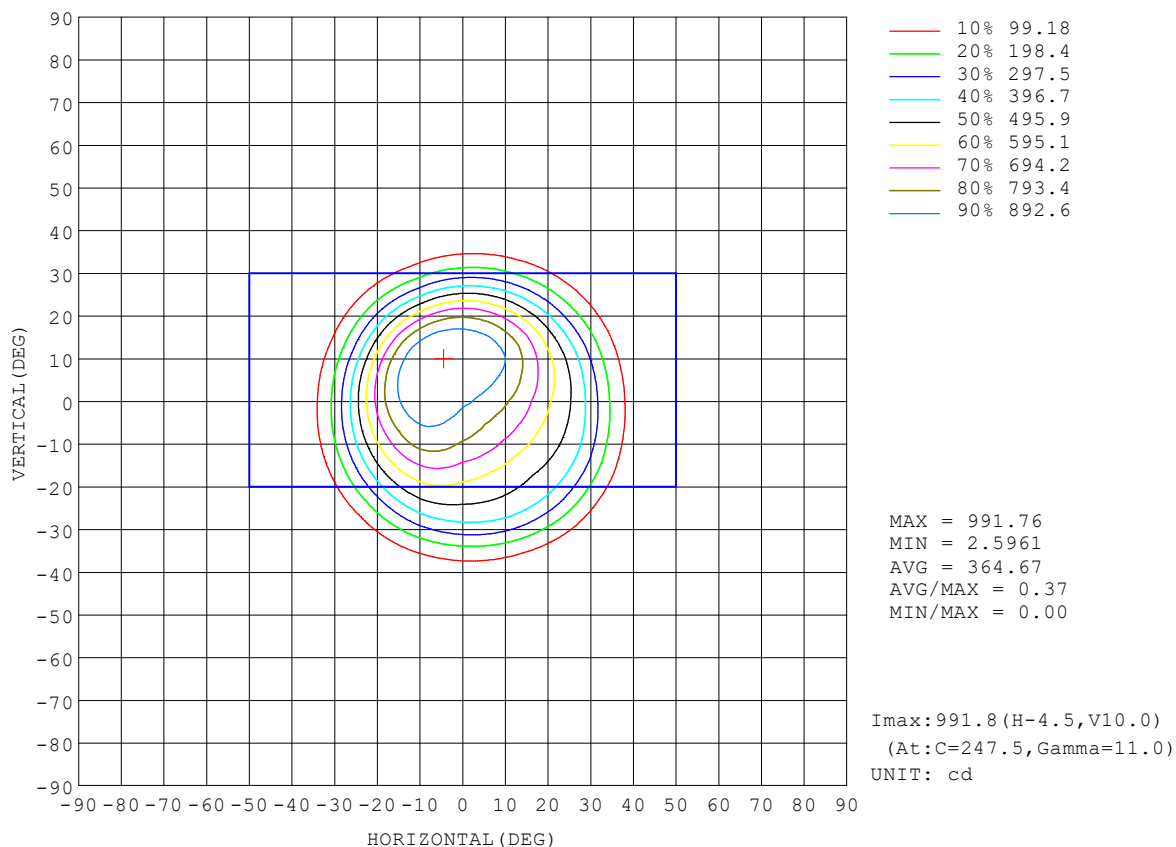
REFLECTANCE										
Ceiling	0.8	0.8	0.8	0.7	0.7	0.7	0.5	0.5	0.5	0
Walls	0.7	0.5	0.3	0.7	0.5	0.3	0.7	0.5	0.3	0
Working plane	0.2	0.2	0.2	0.2	0.2	0.2	0.2	0.2	0.2	0
ROOM INDEX	UTILIZATION FACTORS (PERCENT) $k(RI) \times RCR = 5$									
$k = 0.60$	89	83	80	89	83	80	88	83	79	76
0.80	96	91	87	96	91	87	94	90	87	83
1.00	100	95	92	100	95	92	98	94	91	87
1.25	104	99	96	103	99	96	101	97	95	91
1.50	107	102	99	105	102	99	103	100	98	93
2.00	109	105	102	108	104	101	105	102	100	95
2.50	111	107	104	109	106	103	106	103	101	95
3.00	112	109	106	110	107	105	107	105	103	96
4.00	114	111	109	112	110	108	108	107	105	98
5.00	115	113	111	113	111	110	109	108	107	99
ROOM INDEX	UF (total)									Direct
According to DIN EN 13032-2 2004			Suspended					SHRNOM = 1.25		

C Range: 0 - 360DEG
C Interval: 22.5DEG
Test Speed: HIGH
Temperature: 25.3℃
Operators: 001
Test Date: 2023-10-10

γ Range: 0 - 180DEG
γ Interval: 1.0DEG
Test System: EVERFINE GO-2000B_V1 SYSTEM V2.00.456
Humidity: 65.0%
Test Distance: 7.580m [K=1.0000]
Remarks:

ISOCANDELA DIAGRAM

Test:U:220.68V I:0.0664A P:7.2634W PF:0.4955 Freq:49.99Hz UTHDi:0.00% ITHDi:0.00% KDisp:0 Lamp Flux:642.36x1 lm		
NAME: DL3593 3000K 50D	TYPE:	WEIGHT:
SPEC.:	DIM.:	SERIAL No.:
MFR.: VJC Lighting	SUR.: 40	Shielding Angle:

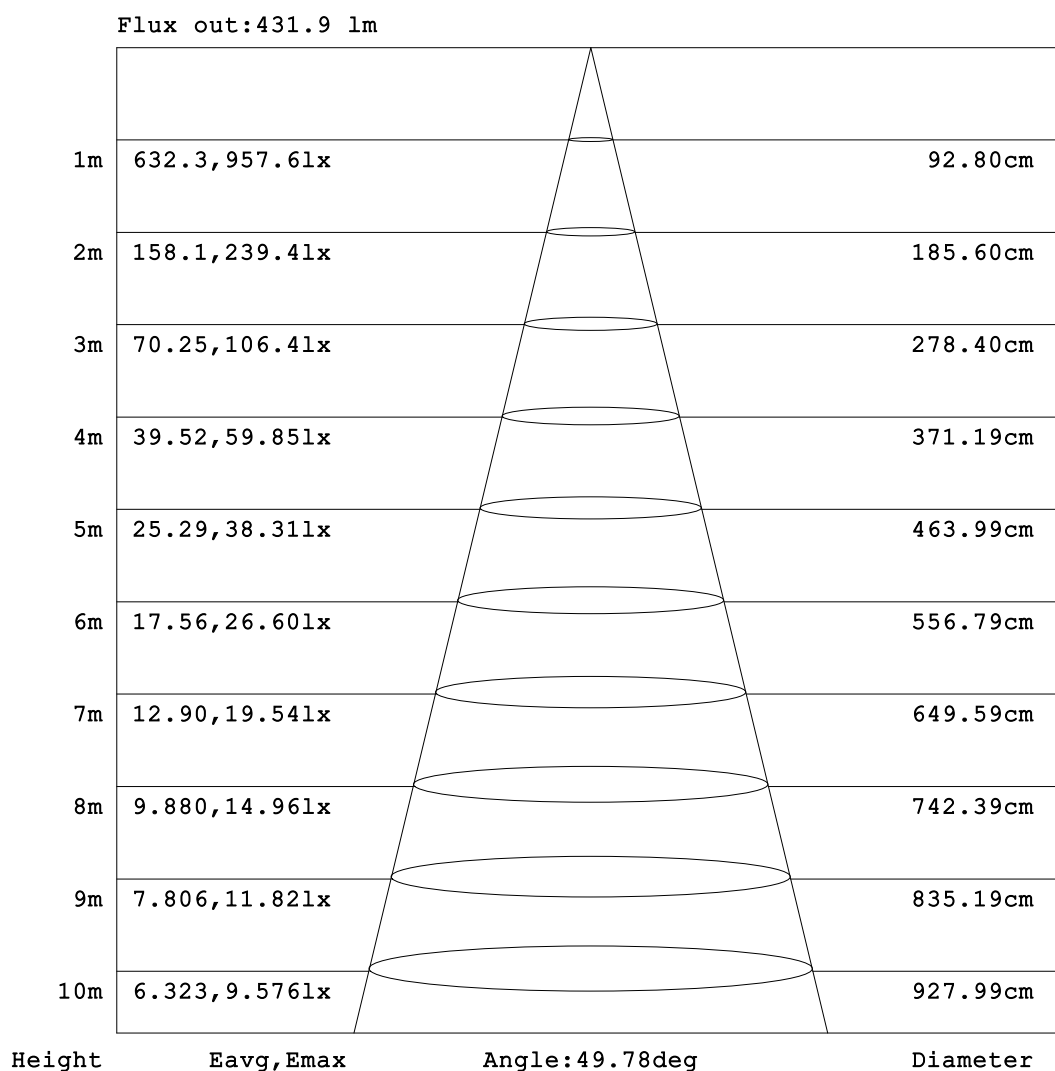


C Range: 0 - 360DEG
C Interval: 22.5DEG
Test Speed: HIGH
Temperature: 25.3°C
Operators: 001
Test Date: 2023-10-10

γ Range: 0 - 180DEG
γ Interval: 1.0DEG
Test System: EVERFINE GO-2000B_V1 SYSTEM V2.00.456
Humidity: 65.0%
Test Distance: 7.580m [K=1.0000]
Remarks:

AAI Figure

Test:U:220.68V I:0.0664A P:7.2634W PF:0.4955 Freq:49.99Hz UTHDi:0.00% ITHDi:0.00% KDisp:0 Lamp Flux:642.36x1 lm		
NAME: DL3593 3000K 50D	TYPE:	WEIGHT:
SPEC.:	DIM.:	SERIAL No.:
MFR.: VJC Lighting	SUR.: 40	Shielding Angle:



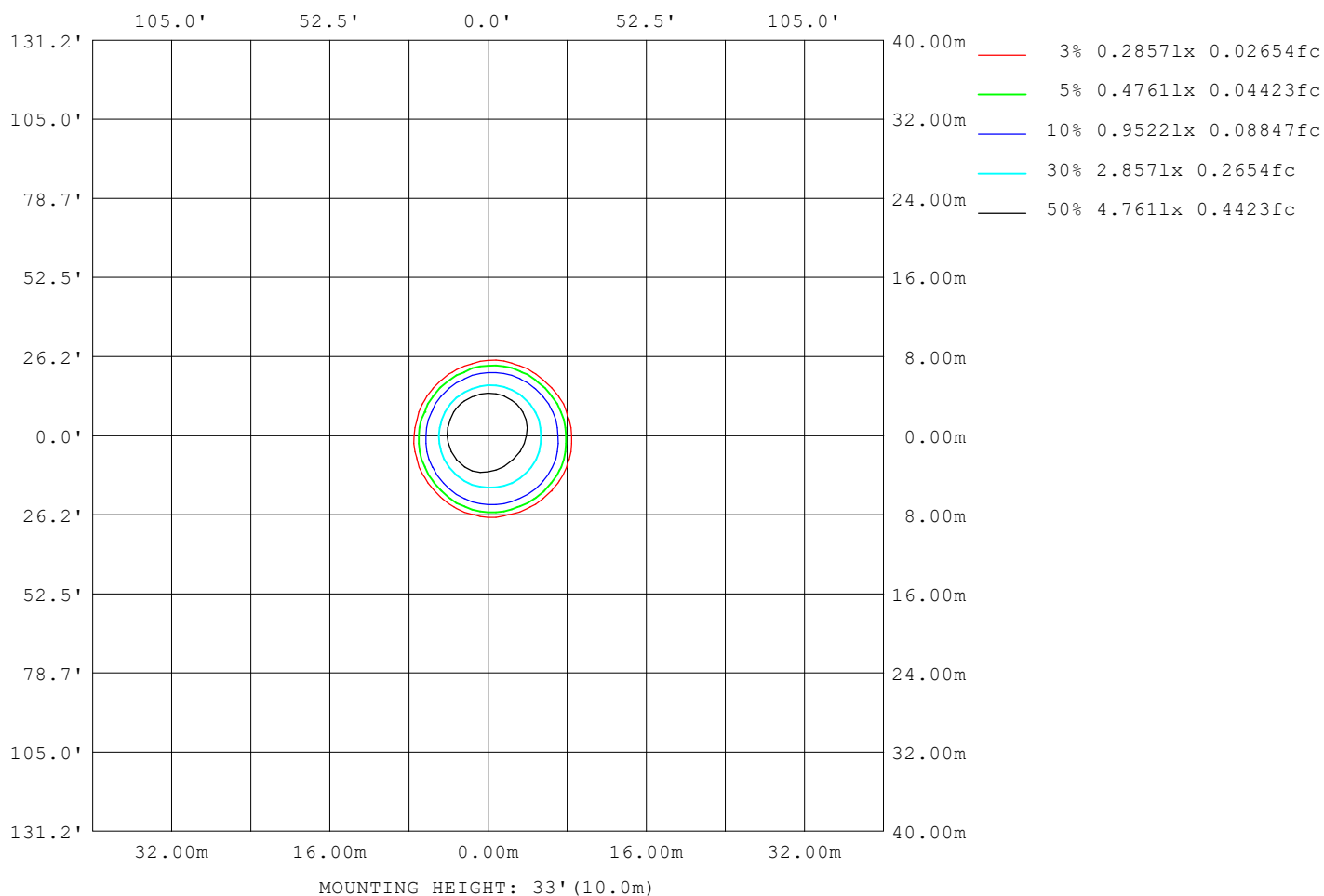
Note: The Curves indicate the illuminated area and the average illumination when the luminaire is at different distance.

C Range: 0 - 360DEG
C Interval: 22.5DEG
Test Speed: HIGH
Temperature: 25.3℃
Operators: 001
Test Date: 2023-10-10

γ Range: 0 - 180DEG
γ Interval: 1.0DEG
Test System: EVERFINE GO-2000B_V1 SYSTEM V2.00.456
Humidity: 65.0%
Test Distance: 7.580m [K=1.0000]
Remarks:

ISOLUX DIAGRAM

Test:U:220.68V I:0.0664A P:7.2634W PF:0.4955 Freq:49.99Hz UTHDi:0.00% ITHDi:0.00% KDisp:0 Lamp Flux:642.36x1 lm		
NAME: DL3593 3000K 50D	TYPE:	WEIGHT:
SPEC.:	DIM.:	SERIAL No.:
MFR.: VJC Lighting	SUR.: 40	Shielding Angle:



C Range: 0 - 360DEG
C Interval: 22.5DEG
Test Speed: HIGH
Temperature: 25.3°C
Operators: 001
Test Date: 2023-10-10

γ Range: 0 - 180DEG
γ Interval: 1.0DEG
Test System: EVERFINE GO-2000B_V1 SYSTEM V2.00.456
Humidity: 65.0%
Test Distance: 7.580m [K=1.0000]
Remarks:

LED Avg.L Report

Test:U:220.68V I:0.0664A P:7.2634W PF:0.4955 Freq:49.99Hz UTHDi:0.00% ITHDi:0.00% KDisp:0 Lamp Flux:642.36x1 lm		
NAME: DL3593 3000K 50D	TYPE:	WEIGHT:
SPEC.:	DIM.:	SERIAL No.:
MFR.: VJC Lighting	SUR.: 40	Shielding Angle:

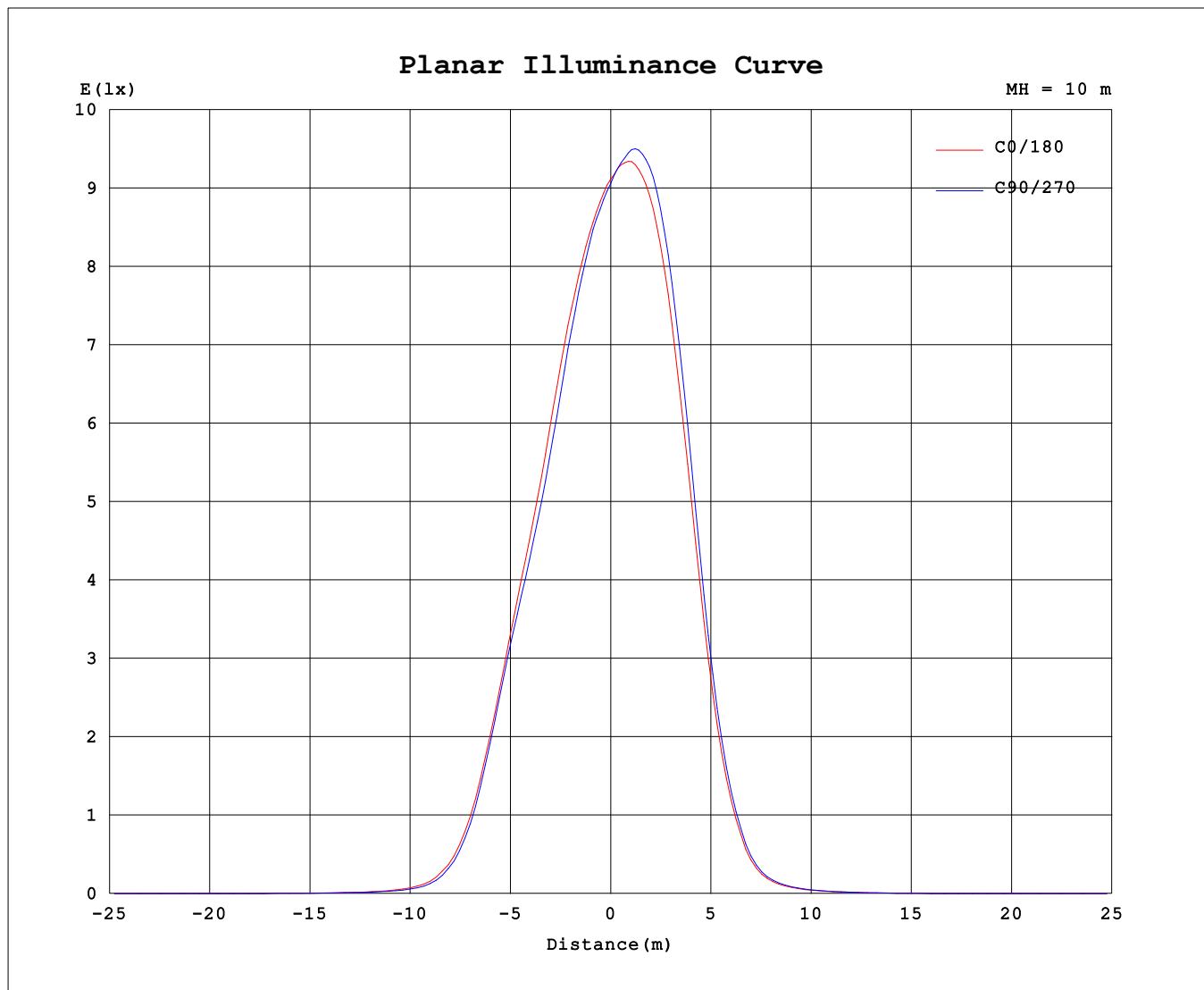
AvgL	cd/m2
L_0~180 (65) av	2120
L_0~180 (75) av	0
L_0~180 (85) av	0
L_90~270 (65) av	2007
L_90~270 (75) av	0
L_90~270 (85) av	0
L_45 (65) av	2030
L_45 (75) av	0
L_45 (85) av	0

Standard: GB/T 29293-2012

C Range: 0 - 360DEG
C Interval: 22.5DEG
Test Speed: HIGH
Temperature:25.3℃
Operators:001
Test Date:2023-10-10

γ Range: 0 - 180DEG
γ Interval: 1.0DEG
Test System:EVERFINE GO-2000B_V1 SYSTEM V2.00.456
Humidity:65.0%
Test Distance:7.580m [K=1.0000]
Remarks:

Planar Illuminance Curve



C Range: 0 - 360DEG
C Interval: 22.5DEG
Test Speed: HIGH
Temperature: 25.3 °C
Operators: 001
Test Date: 2023-10-10

γ Range: 0 - 180DEG
 γ Interval: 1.0DEG
Test System: EVERFINE GO-2000B_V1 SYSTEM V2.00.456
Humidity: 65.0%
Test Distance: 7.580m [K=1.0000]
Remarks:

LUMINOUS DISTRIBUTION INTENSITY DATA

Test:U:220.68V I:0.0664A P:7.2634W PF:0.4955 Freq:49.99Hz		
UTHDi:0.00% ITHDi:0.00% KDisp:0 Lamp Flux:642.36x1 lm		
NAME: DL3593 3000K 50D	TYPE:	WEIGHT:
SPEC.:	DIM.:	SERIAL No.:
MFR.: VJC Lighting	SUR.: 40	Shielding Angle:

Table--1

UNIT: cd

C (DEG) γ (DEG)	0	22.5	45	67.5	90	112.5	135	157.5	180	202.5	225	247.5	270	292.5	315	337.5			
0	908	908	908	908	908	908	908	908	908	908	908	908	908	908	908	908			
5	863	843	835	842	858	880	903	923	941	952	960	962	957	944	923	894			
10	801	767	752	760	781	829	880	913	943	970	988	992	982	962	924	861			
15	715	676	654	657	678	740	800	840	882	924	954	954	941	923	882	790			
20	606	572	551	554	574	619	649	678	715	748	779	779	782	772	744	674			
25	501	492	479	483	480	490	483	473	464	466	485	483	513	532	542	531			
30	354	379	377	365	341	319	281	255	227	216	225	219	250	282	316	347			
35	179	207	205	185	163	143	110	94.9	78.1	72.5	72.4	71.7	87.9	105	133	163			
40	64.0	73.2	70.5	56.3	52.1	42.2	33.4	30.3	27.5	25.8	26.9	27.7	30.8	33.8	40.3	52.9			
45	21.2	21.8	19.4	17.8	16.9	15.2	13.7	13.0	12.6	12.2	12.6	12.9	14.0	14.8	16.6	19.1			
50	9.72	9.66	8.73	8.27	8.03	7.64	7.03	6.87	6.92	6.75	6.97	7.10	7.61	7.92	8.48	9.23			
55	5.40	5.39	5.13	4.94	4.70	4.28	3.77	3.42	3.33	3.16	3.23	3.31	3.70	4.07	4.62	5.04			
60	2.65	2.80	2.65	2.58	2.40	2.16	1.93	1.66	1.69	1.60	1.62	1.65	1.77	1.93	2.15	2.36			
65	1.42	1.46	1.38	1.39	1.26	1.13	0.97	0.78	0.73	0.69	0.70	0.72	0.78	0.90	1.06	1.25			
70	0.52	0.56	0.53	0.50	0.50	0.28	0.10	0.03	0.00	0.00	0.00	0.00	0.02	0.11	0.27	0.41			
75	0.00	0.00	0.00	0.00	0.00	0.00	0.00	0.00	0.00	0.00	0.00	0.00	0.00	0.00	0.00	0.00			
80	0.00	0.00	0.00	0.00	0.00	0.00	0.00	0.00	0.00	0.00	0.00	0.00	0.00	0.00	0.00	0.00			
85	0.00	0.00	0.00	0.00	0.00	0.00	0.00	0.00	0.00	0.00	0.00	0.00	0.00	0.00	0.00	0.00			
90	0.00	0.00	0.00	0.00	0.00	0.00	0.00	0.00	0.00	0.00	0.00	0.00	0.00	0.00	0.00	0.00			
95	0.00	0.00	0.00	0.00	0.00	0.00	0.00	0.00	0.00	0.00	0.00	0.00	0.00	0.00	0.00	0.00			
100	0.00	0.01	0.00	0.01	0.00	0.01	0.00	0.01	0.00	0.00	0.00	0.00	0.00	0.00	0.00	0.00			
105	0.00	0.02	0.00	0.03	0.00	0.03	0.00	0.03	0.01	0.00	0.02	0.00	0.01	0.00	0.01	0.00			
110	0.01	0.04	0.02	0.04	0.02	0.04	0.02	0.04	0.07	0.04	0.07	0.04	0.05	0.02	0.04	0.01			
115	0.03	0.05	0.03	0.05	0.04	0.06	0.05	0.08	0.17	0.16	0.18	0.15	0.16	0.11	0.11	0.08			
120	0.07	0.09	0.07	0.10	0.08	0.12	0.11	0.15	0.34	0.34	0.36	0.33	0.32	0.28	0.27	0.22			
125	0.18	0.19	0.17	0.20	0.20	0.24	0.25	0.30	0.59	0.58	0.59	0.56	0.56	0.51	0.50	0.45			
130	0.38	0.39	0.37	0.40	0.41	0.46	0.48	0.52	0.90	0.88	0.88	0.85	0.84	0.81	0.80	0.76			
135	0.68	0.69	0.69	0.72	0.73	0.77	0.78	0.81	1.29	1.24	1.23	1.20	1.20	1.17	1.18	1.15			
140	1.06	1.07	1.08	1.12	1.12	1.16	1.15	1.17	1.72	1.67	1.65	1.62	1.62	1.59	1.60	1.60			
145	1.49	1.52	1.53	1.57	1.57	1.58	1.56	1.56	2.17	2.11	2.09	2.05	2.04	2.03	2.04	2.04			
150	1.91	1.95	1.96	2.00	1.99	1.98	1.94	1.93	2.61	2.55	2.53	2.48	2.47	2.44	2.45	2.46			
155	2.27	2.31	2.31	2.36	2.34	2.32	2.27	2.28	2.99	2.93	2.92	2.88	2.87	2.81	2.81	2.80			
160	2.53	2.57	2.55	2.60	2.57	2.56	2.52	2.57	3.28	3.25	3.25	3.20	3.18	3.09	3.07	3.03			
165	2.73	2.73	2.72	2.77	2.76	2.78	2.79	2.88	3.51	3.51	3.53	3.49	3.46	3.35	3.27	3.20			
170	2.96	2.96	2.95	2.99	2.99	3.05	3.10	3.21	3.66	3.68	3.72	3.66	3.65	3.55	3.49	3.40			
175	3.26	3.26	3.28	3.30	3.30	3.38	3.44	3.53	3.67	3.71	3.75	3.72	3.69	3.68	3.67	3.59			
180	3.58	3.59	3.62	3.62	3.61	3.63	3.67	3.68	3.61	3.60	3.63	3.62	3.62	3.65	3.68	3.68			

C Range: 0 - 360DEG

C Interval: 22.5DEG

Test Speed: HIGH

Temperature:25.3℃

Operators:001

Test Date:2023-10-10

γ Range: 0 - 180DEG

γ Interval: 1.0DEG

Test System:EVERFINE GO-2000B_V1 SYSTEM V2.00.456

Humidity:65.0%

Test Distance:7.580m [K=1.0000]

Remarks: